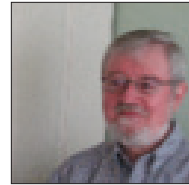


Authors' Biographies

Mike Bell, MA

“Developing Thomas Berry’s Functional Cosmology in the Trenches by Means of Story and Shared Dream Experience”

Mike Bell is a community organizer, a former member of the Passionist Order, and was a close friend of Thomas Berry during his lifetime. He has a MA in Communications from the University of Wisconsin and a MA in Theology from St. Paul’s University, Ottawa, Ontario.



Christopher Key Chapple, PhD

Professor, Loyola Marymount University, Los Angeles, California

Douglass Hunt Lecturer

“Five Oriental Philosophies, Religions of India, Buddhism: Seminal Works of Thomas Berry”

Christopher Key Chapple, PhD, is Doshi Professor of Indic and Comparative Theology and founding director of the Master of Arts in Yoga Studies at Loyola Marymount University. He began graduate studies with Thomas Berry in 1976 at Fordham University, where he completed courses with Berry in History of Religions, Buddhism, Native American Spirituality, Confucianism, and the Apollonian and the Dionysian. Berry served on Chris’s PhD committee for his dissertation *The*



Concept of Will (Paurusa) in the Yogavasistha. He served as Assistant Director at the Institute of Advanced Studies of World Religions and Adjunct Lecturer at SUNY Stony Brook before joining the LMU faculty in 1985. He has published more than 20 books and 150 articles. He serves on the advisory boards of the Forum on Religion and Ecology (Yale), the Ahimsa Center (Pomona), and the Jain Studies Centre (SOAS, London).

Anne Marie Dalton, PhD

*Professor Emerita, Saint Mary's University,
Halifax, Nova Scotia
Douglass Hunt Lecturer
"The Intellectual Legacy of Thomas Berry"*



Anne Marie Dalton, PhD, is Professor Emerita at Saint Mary's University, Halifax, Nova Scotia where she taught Religion and Culture, Religion and Ecology, Religion and Gender, and Religion and International Development in the Department of Religion. She is the author of *A Theology for the Earth: The Contributions of Thomas Berry and Bernard Lonergan*, and *EcoTheology and the Practice of Hope*. She is a contributor to *The Intellectual Journey of Thomas Berry: Imagining the Earth Community*. At Fordham University she studied under Thomas Berry. She holds a BSc and BEd from Memorial University, an MA from Fordham University, and a PhD from Catholic University of America.

Drew Dellinger, PhD

“Thomas Berry & Martin Luther King, Jr.:
Cosmology, Ecology, and Social Justice”

Drew Dellinger, PhD, is an internationally known writer, poet, speaker, and teacher. He is author of the award-winning poetry collection, *Love Letters to the Milky Way*, and the upcoming book, *The Mountaintop Vision: Martin Luther King’s Cosmology of Connection*. In 1991 he created and taught the course “New Cosmology: The Universe Story,” one of the first college-level courses in the United States on ecology, worldviews, and the work of Thomas Berry. In the mid-90s he created “The Cosmic Narrative,” one of the first multimedia presentations of the story of the universe based on the work of Thomas Berry and Brian Swimme. He received *Common Boundary* magazine’s national Green Dove Award for this work in 1997, and in 2007 his presentation was turned into the film *The Awakening Universe*, which he co-created and co-wrote. As a consultant, he was a core developer and designer of the Pachamama Alliance’s “Awakening the Dreamer, Changing the Dream” symposium, now used in 78 countries and 18 languages. He holds a PhD from the California Institute of Integral Studies. www.DrewDellinger.org

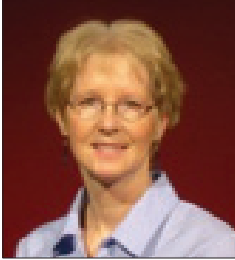


Heather Eaton, PhD

Professor, Saint Paul University, Ottawa, Ontario

Douglass Hunt Lecturer

“The Intellectual Roots of Thomas Berry’s Proposal and the New Story”



Dr. Eaton is a Full Professor of Conflict Studies at Saint Paul University, Ottawa, Canada. She has authored and edited numerous books including *Advancing Nonviolence and Social Transformation: New Perspectives on Nonviolent Theories* with Lauren Levesque (2016), *The Intellectual Journey of Thomas Berry: Imagining the Earth Community*, editor (2014), *Ecological Awareness: Exploring Religion, Ethics and Aesthetics* with Sigurd Bergmann (2011), *Introducing Ecofeminist Theologies* (2005), and *Ecofeminism and Globalization: Exploring Religion, Culture, Context* with Lois Ann Lorentzen (2003). She is involved in conferences, workshops, teaching and publishing on these areas. Her recent work explores the intersection of religion, science, evolution, and ecology; peace and conflict studies on gender, ecology, religion; animal rights; and nonviolence.

Matthew Eaton, PhD

“Communion and Chiasm: Articulating the Unthought-of Aspects of Thomas Berry’s ‘Communion of Subjects’ and Maurice Merleau-Ponty’s Phenomenology of Perception”

Matthew Eaton earned his PhD in theology at the University of St. Michael’s College of

the University of Toronto. His dissertation, *Enfleshing Cosmos and Earth: An Ecological Christology of Deep Incarnation*, explored the expanded relevance of incarnation theologies, as understood within continental philosophical frameworks, for life and ethics within the Anthropocene. He has published numerous articles on eco-theology, Christology, and the thought of Emmanuel Lévinas, and is currently co-editing a collected volume entitled *Encountering Earth: Thinking Theologically with a More-Than Human World*. Matthew is a post-doctoral teaching fellow at Fordham University, The Bronx, New York.



Renée Eli, PhD

“Body, Being, and the Emerging Ecozoic: Thomas Berry’s Relevance to Modern Medicine”

Renée Eli holds a PhD in Transformative Studies with a concentration in Consciousness Studies from the California Institute of Integral Studies. Her manuscript-in-progress, which offers an ontology of life that proposes to shift attitudes toward flourishing, explores the expressiveness of the body and of life itself. Renée was recipient of a doctoral research fellowship from Esalen Institute’s *Center for Theory and Research*. She serves on the Educator Council Board for the Center for Education, Imagination, and the Natural World; the Advisory Board for UNC Asheville’s Master of Liberal Arts and Sciences program; and the Editorial Advisory Boards of the Society for Consciousness Studies’ academic journal, *Consciousness: Ideas and Research for*



the Twenty First Century, and the Center for Ecozoic Societies' journal, *The Ecozoic*.

Herman Greene, JD, DMin

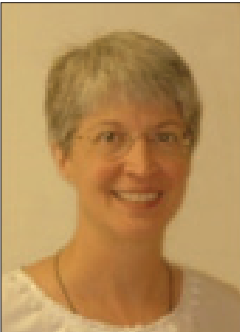
“Introduction to this Issue”;
“Taking Thomas Berry’s Thought Seriously”;
and “Does Thomas Berry Provide a Foundational Set of Principles for the Transition to Ecozoic Societies?”



Herman Greene is President of the Center for Ecozoic Societies. He serves on the Boards of Directors of Toward Ecological Civilization and the International Process Network, as well as on the Advisory Boards of the Center for Process Studies and the Institute for the Post-Modern Development of China. He conducts a part-time practice in corporate, tax and securities law through Greene Law, PLLC. He holds graduate degrees in Spirituality and Sustainability, Law, Theology, and Political Science. He is the author of the forthcoming book *The Challenge and Promise of Ecological Civilization*.

Nancy Hardy

“Living Into Thomas Berry: Prophet of a New Story”



Nancy Hardy is a theological/cosmological activist. Once a Franciscan monastic, she is now an integral, inter-religious, creation-process Franciscan Unitarian Universalist, a permaculture teacher, and member of a local intentional community where she lives with her husband,

Albert. She is currently studying Lakota ceremony and cosmology in the Woptura Oglala Sioux lineage and is dedicated to helping to build and restore healthy villages.

Thomas Keevey, MA

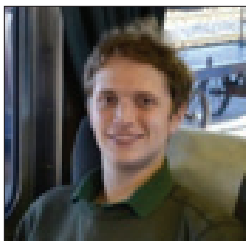
“Thomas Berry, CP - The Passionist Heritage in the Great Work”

Thomas Keevey, a native of Philadelphia and currently lives in Ewing, New Jersey, with his wife, Catherine. Tom earned Masters’ degrees from St. Michael’s College in New Jersey, the University of Ottawa in Canada, and the Catholic Institute of Paris, France, where he also pursued doctoral studies in Liturgy. He has specialized in ritual, symbol, worship, and environmental studies. He lived and studied with Fr. Thomas Berry, Passionist, cultural historian, and theologian of the Earth. After years of Passionist community and ministry, executive management, and teaching at St. John’s University, Queens, New York, he worked until retirement in the New Jersey Division of Criminal Justice, Office of Victim-Witness Advocacy, which provides services to those who are victims of crime. His office was actively involved in assisting New Jersey victims and their families after the disasters of 9/11.



Malcolm Kenton

“From Demonic Dream towards a New Story: Reflection on Thomas Berry’s Instructions for Reorienting the Human Project”



Malcolm Kenton is a native of Greensboro, North Carolina, and was fortunate to be one of Thomas Berry’s last students. He is a writer, researcher, photographer, videographer, and communications professional with interests in sustainability—particularly in terms of transportation—and engaged citizenship. He is a 2008 graduate of Greensboro’s Guilford College with a BA in Political Science and Environmental Studies. In 2016 he completed an MA in Transportation Policy from George Mason University. He currently resides in Washington, DC, where, as a consultant to a passenger rail operations contractor and to a travel consumer advocacy organization, he contributes his talents to advancing a balanced, efficient transportation system for the 21st century based on a robust network of passenger trains. He is a freelance contributor to *Trains Magazine*.

Allysyn Kiplinger, MA

“Naming a New Geological Era: The Ecozoic Era, Its Meaning and Historical Antecedents”



A native of the San Francisco bay area, Allysyn Kiplinger is the editor of *EcozoicTimes.com*, a news source and resource center for the emerging Ecozoic era. Two dogs and one cat grace her life. She is a “maker of things”. Self-employed since graduating from university, she has been a printer and an ecological renovator

of old houses, and is currently a landlord and natural soap maker. She studied Anthropology at UC Berkeley (1985, BA), environmental philosophy at Schumacher College (1992-93), and new cosmology at California Institute of Integral Studies (1994-96, 2001-04, MA) with Brian Swimme.

Abigail L. Lofte, PhD Candidate

“What Cry Can Bring a Healing? Christian Resurrection in the Work of Thomas Berry”

Abigail Lofte is a PhD candidate at the University of St. Michael’s College in the University of Toronto. Her research focuses on developing an eco-theological anthropology through the lens of Christian resurrection. Her other research interests include Christology and eschatology.



Dennis O’Hara, PhD, MDiv, DC, ND

*Professor, University of St. Michael’s College,
Toronto*

Douglass Hunt Lecturer

“Earth as Primary Healer?”

Dennis Patrick O’Hara is an associate professor and the director of the Elliott Allen Institute for Theology & Ecology at the Faculty of Theology at the University of St. Michael’s College in the University of Toronto. He is also an associate member of the graduate faculty at the School for the Environment at the University of Toronto. In addition to teaching courses in ecological theology and ethics at the



Toronto School of Theology, he has worked for the World Health Organization and Health Canada where he prepared policy positions and research papers. Prior to becoming a theologian, he practised as a chiropractor and naturopathic doctor.

Eve Olive

“Rudolf Steiner and Thomas Berry: Anthroposophy and the Ecozoic”



Eve Olive has been a student of the work of Rudolf Steiner for over 50 years. She has a degree in Architecture from the University of Natal in Durban, South Africa, where she grew up. Her second profession is eurythmy which she studied in Dornach, Switzerland, and New York. Eurythmy is an art of movement that makes visible the gestures inherent in the sounds of language and music. Poems can be performed. Eve taught for many years at the Emerson Waldorf School in Chapel Hill, North Carolina, which she helped found and design. She is the editor of *Cosmic Child: Inspired Writings from the Threshold of Birth*, which includes several of her poems.

James Peacock, PhD

“Personal Reflections on My Journey of Teaching Thomas Berry”



James Peacock is emeritus Kenan Professor of Anthropology and Professor of Comparative Literature at the University of North Carolina at Chapel Hill. He received a BA from Duke

and a PhD from Harvard. He is a fellow of the American Academy of Arts and Sciences. He has received various grants and awards including Guggenheim, Rockefeller, the Thomas Jefferson award at UNC, the Franz Boas award of the American Anthropological Association, Citizen of the World by the International Affairs Council, North Carolina, Johnson Award for Teaching, and the Massey Award for public service. He has served as Chair of the UNC Faculty Senate, Chair of the Anthropology Department, and Director of the University Center for International Studies. He served as President of the American Anthropological Association. His field research was primarily in Indonesia and Appalachia. His publications include *The Anthropological Lens* (Cambridge University Press, revised edition 2001, Chinese edition 2009), and two books published in 2007: *Grounded Globalism: How the U.S. South Embraces the World*, and *Identity Matters: Ethnic and Sectarian Conflict*. Recent activities include Co-Director, Duke-UNC Rotary Center on Peace and Conflict, and Chair of the Board, Worldview.

Shirley Pevarnik, MLA

“The First Earth Church”

Shirley Pevarnik has a Masters of Liberal Arts in Creation Spirituality from Naropa University. She has studied with Brian Swimme at the California Institute of Integral Studies in San Francisco, Matthew Fox at the University of Creation Spirituality in Oakland, and is a certified instructor of Joanna Macy’s work.



She was a close friend and student of Thomas Berry. She lives in New Mexico and Arizona where she has started many Ecozoic study groups and hosted Joanna Macy workshops. She has been an instructor at Western New Mexico University and the First Born Program where she helped young people to obtain their High School Diplomas and learn they are the universe becoming conscious of itself. She continues to study and share about the universe story and all of its myriad insights and implications for our challenged world.

Sheri Ritchlin, PhD

Douglass Hunt Lecturer

“Being Cosmos: The Human Relationship to Cosmos in Thomas Berry and Confucius”



Sheri Ritchlin received her PhD from the California Institute of Integral Studies under the guidance of Professors Yi Wu, Brian Swimme, and Richard Tarnas. Her dissertation was *The Return of the Sage: A New Cosmology Meets the Way of Heaven and Earth in the I Ching*. She is the author of *One-ing* and *Dream to Waken*, and has contributed chapters to *The Epic of Evolution: Science's Story & Humanity's Response; Science, Wisdom & the Future*; and *The Spirit of a Woman: Stories to Empower and Inspire*. She has published articles in *Parabola Magazine*, *ReVision*, and the Institute of Noetic Sciences journal, *Shift*. Her new book, *A Farm in Marin: Portraits in Time from Pangaea to Point Reyes*, will be released in fall 2017. Her website is www.sheriritchlin.com.

Michael Ross, PhD Candidate

“Ecstasy of the Earth: Some Implications of Thomas Berry & Cosmogogenesis for Sexual Ethics”

Michael Ross is a PhD candidate in the Faculty of Theology at the University of St. Michael's College in the University of Toronto, where he recently designed and taught a course on *Laudato si'*. Michael's research explores the intersection of ecotheology and sexuality. He lives in London, Ontario, Canada.



Jim Schenk, MSW, MTh

“Thomas Berry's Influence on a Thirty-five Year Evolution from Story to Action”

Jim Schenk served as the director of Imago, an ecological education organization in Cincinnati for 28 years. He was involved in beginning the Enright Ridge Urban Eco-village, where he currently lives with his wife, Eileen. He has an MA in Theology and an MSW in Social Work. He edited the book *What Does God Look Like In an Expanding Universe?*, which includes interviews with Thomas Berry. He coauthored the book *Starting Your Urban CSA, A Step-by-Step Guide*, and is finishing a book on Enright Ridge Urban Ecovillage, which looks at a way to ecologically rejuvenate our cities.



David Schenck, PhD

“Cosmology and Wisdom: The Great Teaching Work of Thomas Berry”



David Schenck is trained in religion and philosophy, with an emphasis in phenomenology and bioethics. He is co-author of two books that consider ethics and healing in healthcare from an empirical perspective, *Healers: Extraordinary Clinicians at Work* and *What Patients Teach: Everyday Ethics of Healthcare*. Director of the Ethics Program at the Medical University of South Carolina, he is also a clinical ethics consultant, with over 20 years' experience working in hospitals, clinics, and hospices.

F. Nelson Stover, MDiv

“At the Species Level”



F. Nelson Stover is a cultural engineer. He led human development training programs for two decades. For another two decades, he designed and implemented computer software for professional associations in North Carolina. A collection of his poems, *The Rocks Sang Om*, was published in Nepal in 1999. In 2014 he published *Through Three Portals: Helping Tomorrow Unfold*. He and his wife, Elaine, received the Greensboro Public Library's 2012 Thomas Berry Award for their work in making Thomas's work more available. He is now President of Emerging Ecology, a non-profit committed to promoting a worldview for the next generations' solutions. He leads courses on contemporary social issues and the individual journey to profound consciousness. His

lectures and writings focus on foundational principles and practical actions relevant for developing a mutually enhancing relationship between the human and non-human worlds.

John Sullivan, PhD

“Thomas Berry: Harbinger of a Communal Spirituality Rooted in Earth and Cosmos as Revelatory”

Dr. John G. Sullivan, a native of Newport, Rhode Island, holds two earned doctorates: a JCD from the Lateran University, Rome, Italy, and a PhD in Philosophy from the University of North Carolina at Chapel Hill. He has a triple focus for his work. First, he is Powell Professor of Philosophy Emeritus at Elon University and was Elon’s first Distinguished University Professor. He retired in August 2006 after 36 years at Elon. Second, he has a long-time relationship to Tai Sophia Institute in Laurel, Maryland (now the Maryland University of Integrative Health). Third, he has been involved with Second Journey, a non-profit organization in Chapel Hill that focuses on the possibilities of later life. He is author of five books: *To Come to Life More Fully* (1991); *Living Large: Transformative Work at the Intersection of Ethics and Spirituality* (2004); *The Spiral of the Seasons* (2009); *The Fourfold Path to Wholeness* (2010); and *Integral Living: Embracing the Four Seasons of Life as Daily Practice* (2014). His abiding interest is the place where philosophy, psychology, and spirituality—East, West and beyond—intersect and mutually enhance one another.



Tim Toben

“Beethoven’s Ninth Symphony and the Ecozoic”



Tim Toben and his wife Megan are the co-founders and leaders of Pickards Mountain Eco-Institute, which is dedicated to healing the Human-Earth relationship through Earth Literacy and Local Economy. As an energy and environment advisor to North Carolina Governor Perdue, he was Chair of the North Carolina Energy Policy Council and a member of the North Carolina Legislative Commission on Global Climate Change.

Peggy Whalen-Levitt, PhD

“Thomas Berry’s ‘Communion of Subjects’: Awakening the Understanding Heart”



Peggy Whalen-Levitt, PhD, is the Director of The Center for Education, Imagination and the Natural World in Greensboro, North Carolina. Working closely with Center founder Carolyn Toben and cultural historian Thomas Berry, Peggy has been deeply engaged in the formation of a work for educators and children, based in intuitive, imaginal, and contemplative ways of knowing, that recovers the inner vision of a society in harmony with nature. She holds a PhD in Language in Education from the University of Pennsylvania, where she co-created a graduate course of study in childhood imagination. She has written widely on aesthetic communication in childhood and is the editor of *Chrysalis*, the Center’s journal, *Only the Sacred: Transforming Education in the*

Twenty-first Century (a Chrysalis reader), and the Center's Emergence Series published in 2015. Peggy coordinates the Center's program for educators called "The Inner Life of the Child in Nature: Presence and Practice."

Catherine Wright, PhD, MDiv

"In the Darkness Grows the Green: Thomas Berry's Contribution to Contemporary Theological Conversations Concerning Human Suffering"

Catherine Wright, BSc, BEd, MDiv, PhD (Regis College, Toronto School of Theology and the Elliot Allen Institute for Theology and Ecology). In 2014 Catherine joined Wingate University, North Carolina as an Assistant Professor in the Religion and Philosophy Department. Currently, she specializes in senior level ethics courses. She has crafted several new religion courses including Ecotheology and Christian responses to the Mystery of Suffering, as well as sophomore community/civic engagement courses on ecojustice and ecoliteracy. Her writing concentrates in the areas of ecotheology and contemporary Christian ethics. Her book, *Creation, God and Humanity: Engaging the Mystery of Suffering within the Sacred Cosmos*, will be published in November 2017 by Paulist Press.

